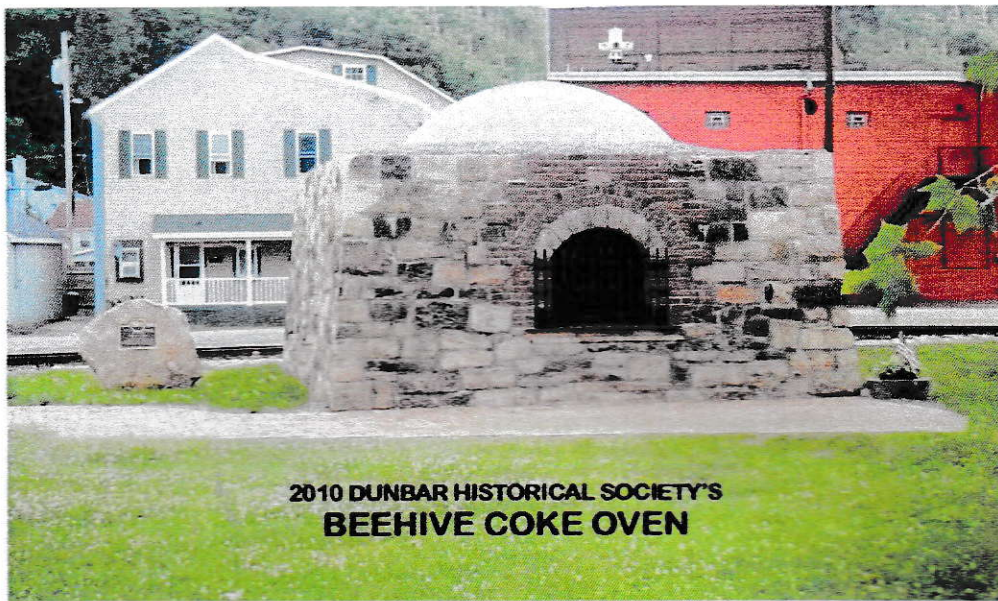


THE DUNBAR (PA) HISTORICAL SOCIETY
"Celebrating 15 Years in 2010"

AT A GLANCE...
HOW WE BUILT
A COKE OVEN



Beehive Coke Oven
Dedicated May 1, 2010

The Dunbar Historical Society is a 501 (C) (3) Non-Profit Organization
Visit us at www.dunbarhistoricalsociety.com



Published by Keiser Brothers Printing
FULFILLING ALL YOUR PRINTING NEEDS
12275 Rockville Road; Glen Rock, PA 17327-8125
717.227.1156 kbprinting@comcast.net

A Little History...

The Dunbar Historical Society is a small community non-profit organization whose mission is to preserve and share the rich heritage of this southwestern Pennsylvania town and surrounding area.

Located in Fayette County, Dunbar was near the center of the Connellsville Coke Region, an area of rich coal, stretching about 50 miles from Latrobe at the north to Fairchance in southern Fayette County.

Employment at the Dunbar Furnace and its allied industries brought thousands of immigrant workers to the area in the mid to late 1800's and early 1900's.

Wanting to preserve some of that heritage, the Society decided in 2006 to build a coke oven to original Frick plans with the goal to preserve and promote the town's rich industrial heritage. Unfortunately, no visitor-friendly beehive coke ovens remain for people to learn about this industry.

Little did the members know of the exhausting, wonderful, exciting, journey on which they were about to embark. This booklet will illustrate the work and dedication it took to create the beehive coke oven that now proudly stands in the middle of Dunbar Borough!

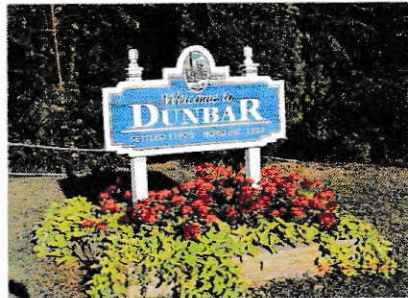
But "What the Heck is Coke?"

Briefly, coke is the remains of the controlled burning of coal. Coal would be dropped into the oven through the trunnel head and leveled.

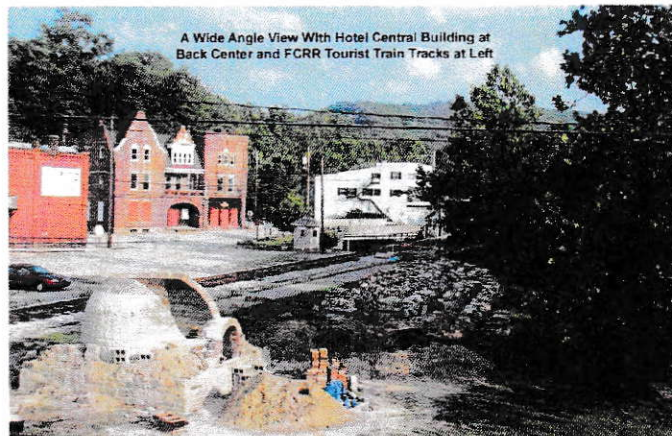
The coke oven door is then sealed with only a small air hole for controlling the burn. After 48 to 72 hours, the by-products of the coal--gas, tar, ammonia--are burned off and all that remains is coke...an almost pure form of carbon and an excellent fuel for the iron and eventually the steel industry.

The coke workers referred to the burned coal as a "coal cake" because of how it looked when the oven door was opened after the burn. The two words were shortened from COal-caKE to CO-KE.

Dunbar Scenes and Beehive Oven Location



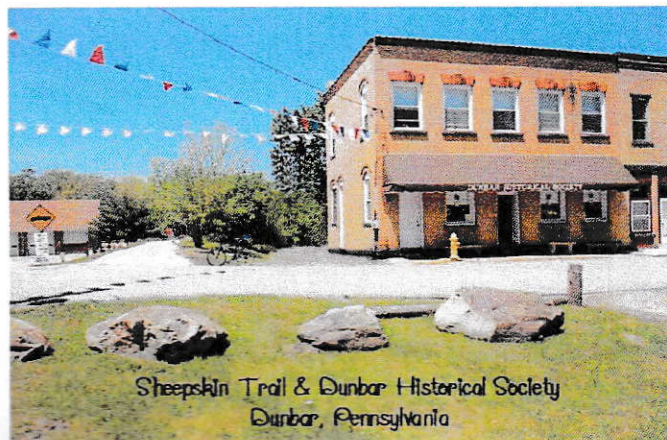
Welcome Sign at Dunbar's Beautiful Honor Roll (Shown Below)



The Beehive Coke Oven Location Across the Street from the Dunbar Historical Society's Education Center (below)



Completed in 1944

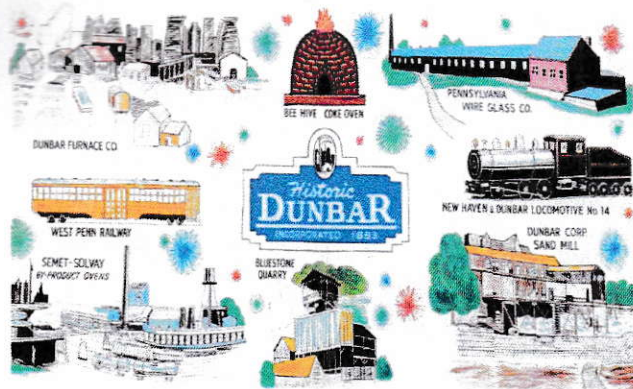


Sheepskin Trail & Dunbar Historical Society
Dunbar, Pennsylvania

Below is the Fayette Central Railroad Tourist Train Next to the Beehive Oven

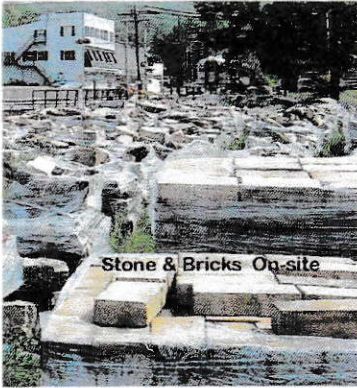


Dunbar Historical Society & the Sheepskin Trail



Town Mural Showing Dunbar's Industry

Cross Section of Oven & Materials



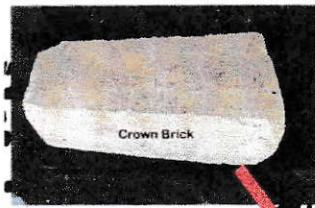
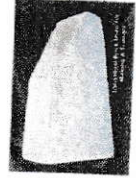
Stone & Bricks On-site

Materials Onsite



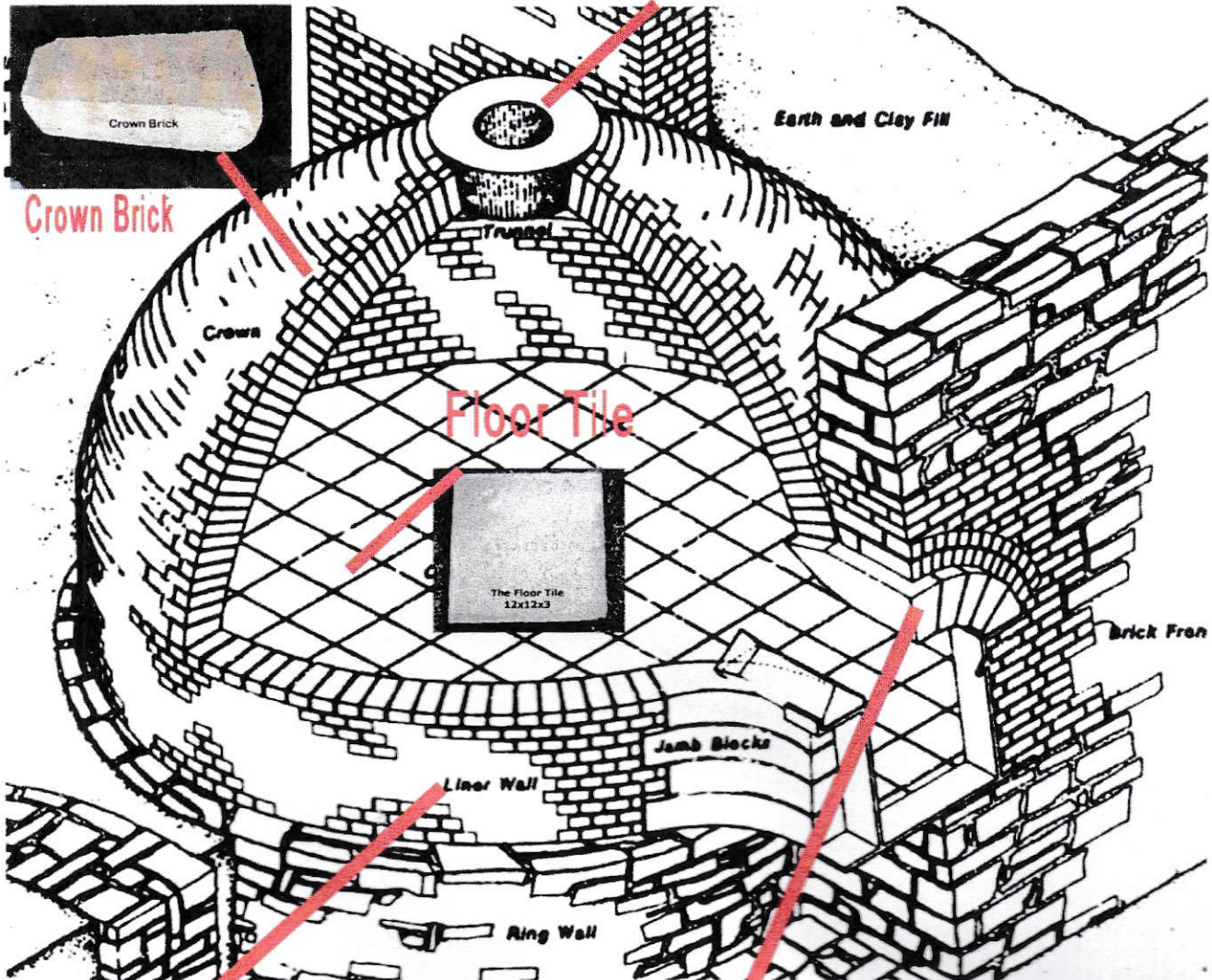
A Trunnel Hole Made From Bricks

Completed Trunnel & Single Trunnel Brick



Crown Brick

Crown Brick



LINER BRICK

Liner Brick



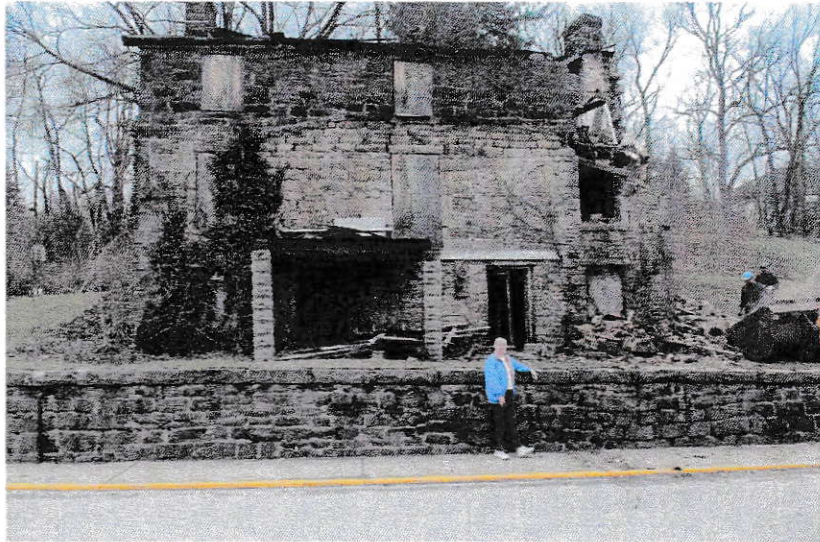
Arch Sets & Skewback Sets

Arch Sets & Skewbacks



Dauber Brick
Used to Mud Up Door

Beautiful Cut Stone from the Mid-19th Century
Bryson House was Donated to the Dunbar
Historical Society by Owners Karen Ross (Below)
and the Late Louis Ross



The Quest for the Materials

Taking Two Years to Locate, all Materials Were Found Here in Fayette County at the Shamrock and Shoaf Sites



Shamrock Ovens in 2008



Finding the Ovens!



The Long-sought After Prize! Stored Unused in the Old Ovens for Decades!

Counting
&
Palleting



Wrapping
Pallets



Hauling The Pallets Out & Taking Them to Dunbar!

The Beginning of Construction: The Footer



Marking the Location & the First Shovel of Dirt



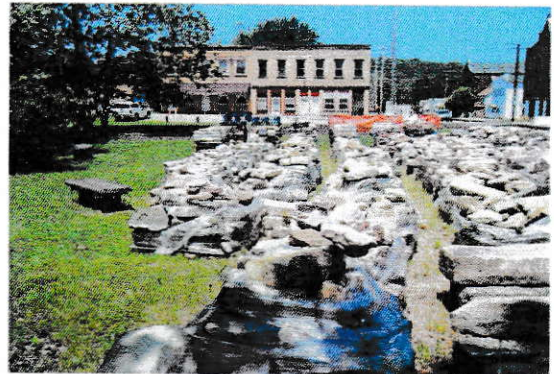
Drainage & Reinforcement



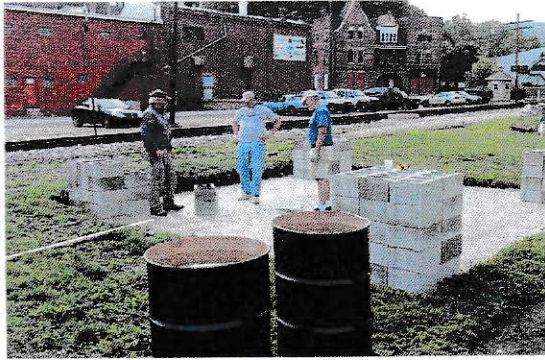
Pouring & Leveling the Concrete



A Sea of Stone & Bricks Await the Start of the Beehive Oven



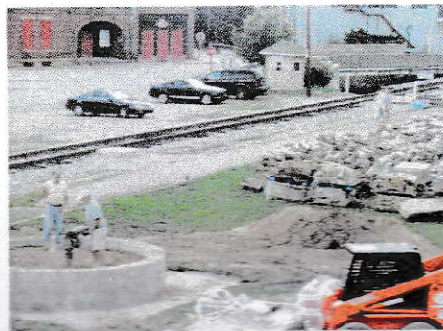
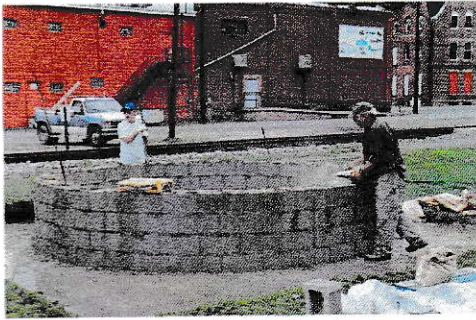
The Sub-Structure & Base



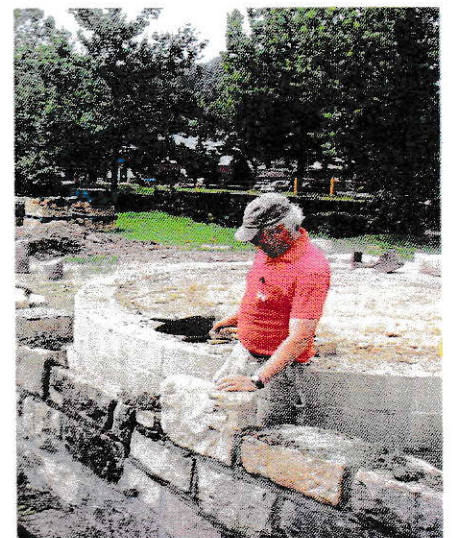
**Stone Mason Barry
Pritchard of The
Salient Angle in
Masonry of Scottdale,
PA Volunteered to
Work on the Oven!**



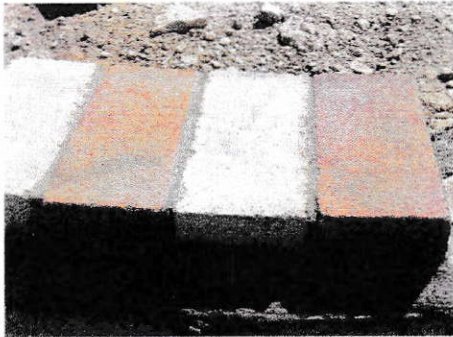
Filling the Substructure and Beginning the Outside Wall



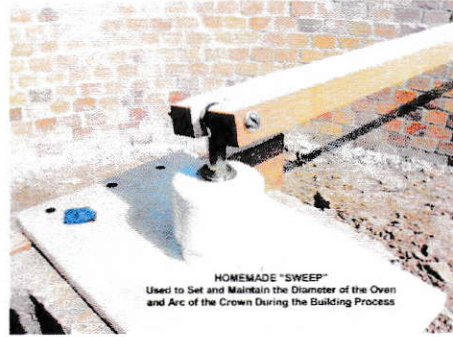
After the Substructure was Filled & Tamped, Stones Were Moved to the Site to Begin Construction of the Outer Wall Which will Be Built Up as the Beehive Oven Goes Up



The Beehive Begins and the Wall Goes Up



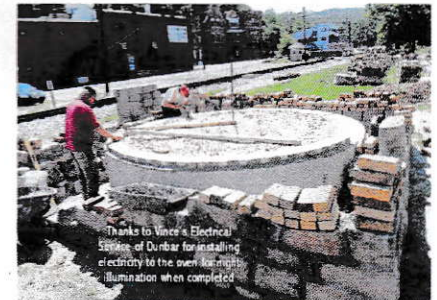
Liner Bricks



HOMEMADE "SWEEP"
Used to Set and Maintain the Diameter of the Oven
and Arc of the Crown During the Building Process



The "Sweep" Above and Below
is used to Keep the Diameter
and Arch Consistent as the
Oven Goes Up



Thanks to Wire's Electrical
Services of Dunbar for installing
electricty to the oven for night
illumination when completed



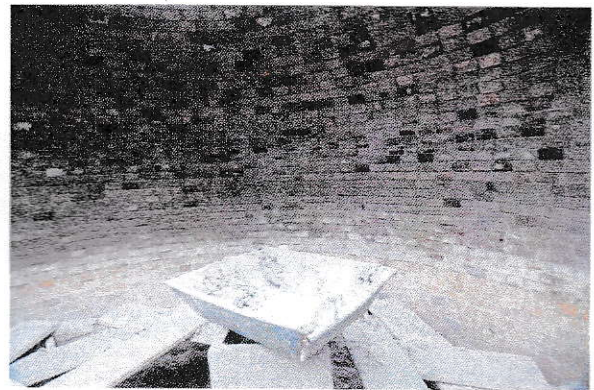
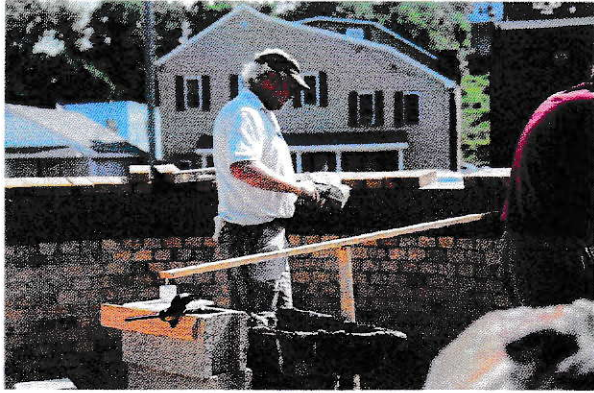
An overview of the
substructure and wall
surround. The clay in
cente will be the coke
oven floor

A View from Above as the
Oven Oven and Wall Go Up

Fayette Central Railroad Tourists
Get a "Raiside" View of the
Coke Oven Progress



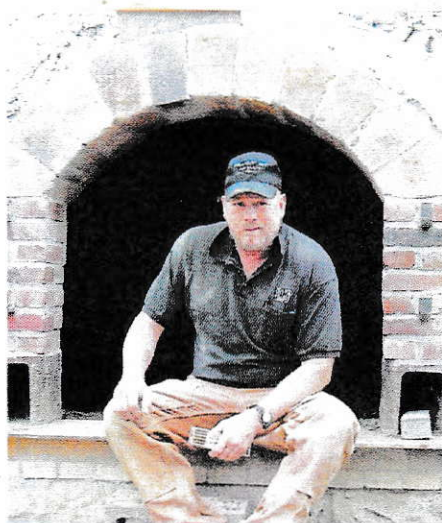
Pictures Showing the Transition Between the Oven and the Oven Front. Electricity was Added for Evening Illumination.



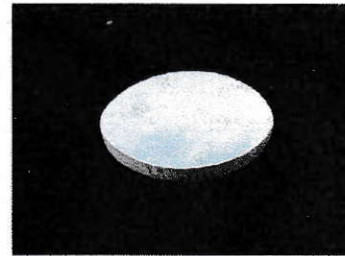
The Crown Completed and Outside Wall Built Up



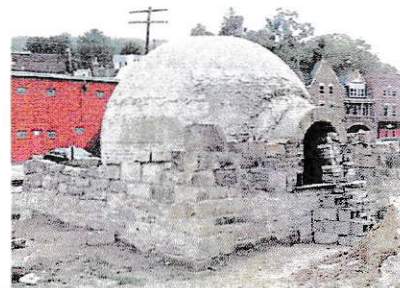
Arch View from Inside



Stone Mason Barry Pritchard
The Salient Angle in Masonry
Scottdale, PA



Trunnel View from Inside

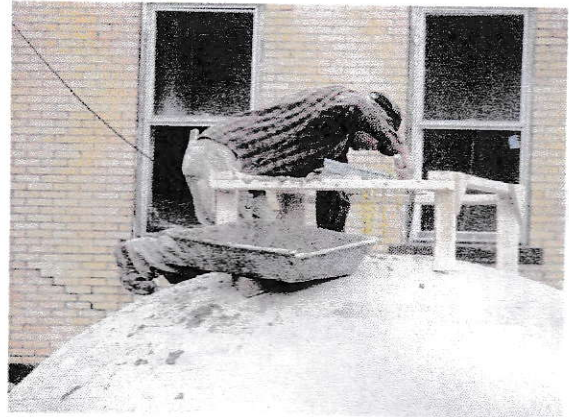


Building Up the Outside Stone Wall. Corner Height Shown (below) Will Be the Top of Wall. Part of the Crown Will Be Left Exposed for Educational Purposes



This oven's outside stone wall is sloped in 1 inch for every 12 inches of height for strength. It is called the "batter."

Completing the "Trunnel Head" and the Dome



Barry Pritchard uses special form made by George Myers (in red hat) for holding the trunnel bricks in place until set.

The trunnel head is the "hole" at the top of the oven where coal was dropped in for making coke.



Coke Oven Critter!



View from Inside

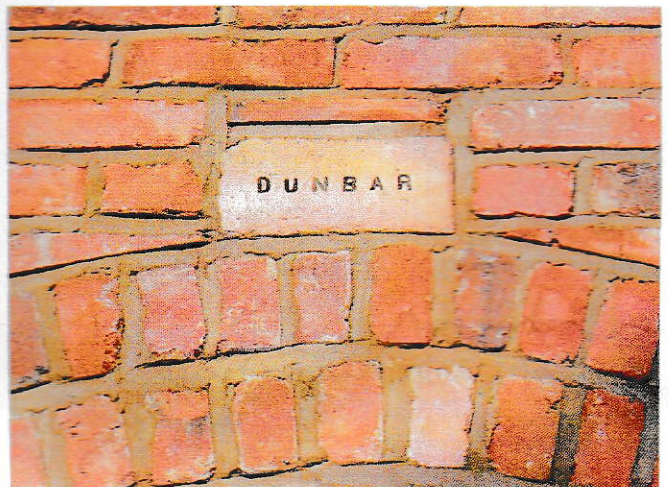
The Oven Face & The "DUNBAR" Brick



The Completed Arch
& Position of the
Dunbar Brick

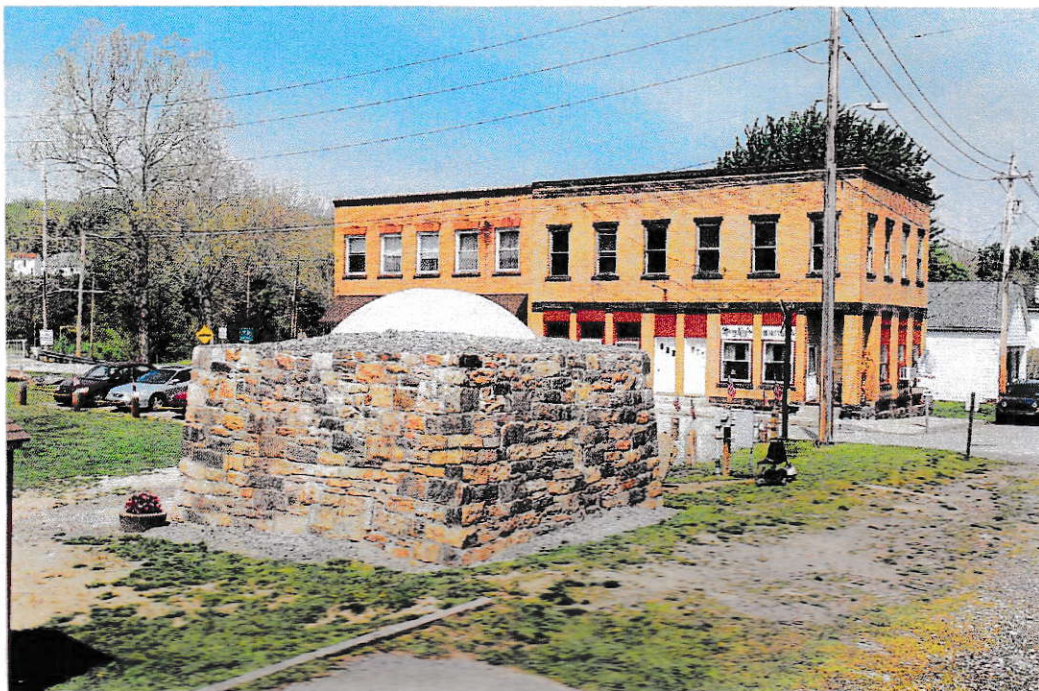
The "DUNBAR" Brick was
Made in the Late 1800s
Right Here in Dunbar!

It was donated by Dunbar
resident Mark Pepe.



The Dome and the Preservation Project

Normally, the dome of the beehive would not be visible in a working beehive coke oven. This beehive coke oven was designed to be used for educational purposes and so the dome was left exposed so it could be viewed.



A special fundraiser was held to raise funds to add a concrete top and special preservative to the dome. The project has been completed.

The completed outside stone wall dimensions are 20 x 20 feet square and 12 feet in overall height from ground to top of oven. The inside floor measures 12 feet 6 inches in diameter and the height from floor to trunnel head is 8 feet.



THE HISTORIC LANDMARK PLAQUE



THIS PLAQUE, DESIGNATING THE BEEHIVE COKE OVEN AS A NATIONAL HISTORIC LANDMARK, WAS PRESENTED TO THE DUNBAR HISTORICAL SOCIETY BY ASM INTERNATIONAL AND PAM SEIGHMAN AND ELAINE DEFRANK OF PENN STATE'S COAL AND COKE HERITAGE CENTER, FAYETTE THE EBERLY CAMPUS.

SHOWN LEFT IS THE PLAQUE PLACED ON STONE NEXT TO BEEHIVE OVEN.

Beehive Coke Oven Ribbon-Cutting and Dedication May 1, 2010

As part of the Dunbar Historical Society 15th anniversary celebration on May 1, 2010, a ribbon-cutting and dedication was held. The "Historic Landmark" Plaque was unveiled at the ceremony. The Society also was presented with a "Special Recognition" by the Dunbar Borough Council.



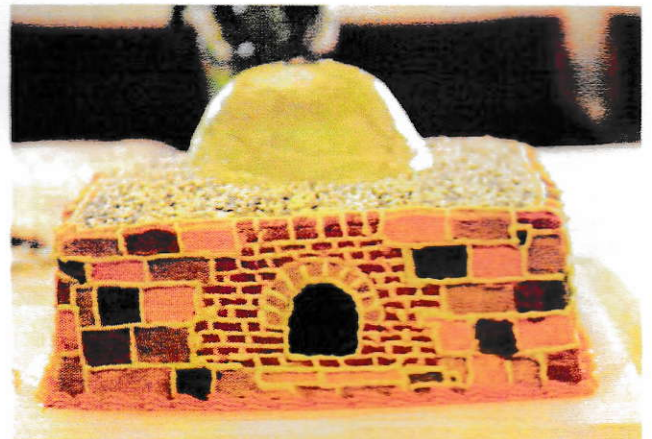
Ribbon-cutting by the builders



Unveiling the plaque



Those in attendance



Coke Oven Cake
by "Cakes by Jerome"

Educational Programming

While the beehive coke oven was built to honor our past, sharing that past with students and other visitors is a major goal of the Dunbar Historical Society. Student field trips are now a reality. In partnership with the Fayette Central Railroad, the "Riding the Rails to History" package is now available. Students ride the train to Dunbar where they view the "Dunbar Coal and Coke Heritage" program and then visit the beehive coke oven.

Bus tours, Sheepskin trail riders, and visitors arriving by car have the opportunity to learn about the beehive coke oven era. Since the project started in 2006, over 15,000 people have visited the society coming from 34 states and 7 countries to date.

The society has over 80 photo albums, dozens of newspapers, books, articles, and memorabilia generously donated by current and former Dunbar residents.

Visit our website at: www.dunbarhistoricalsociety.com



Bus Tour Group

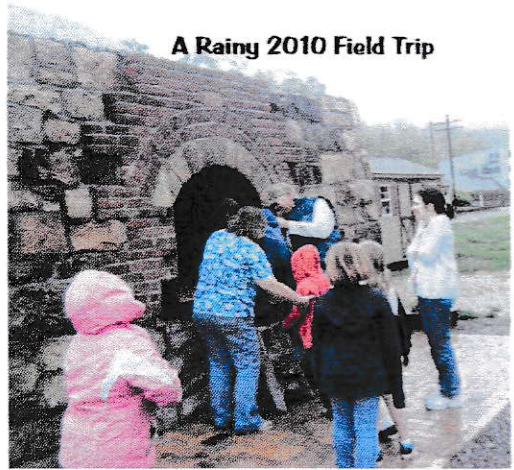


School Field Trip
In the Oven!

Educational Programming



School Field Trip
At DHS Center for Program
and a Visit to the Coke Oven



A Rainy 2010 Field Trip

Coke Oven
Educational Display



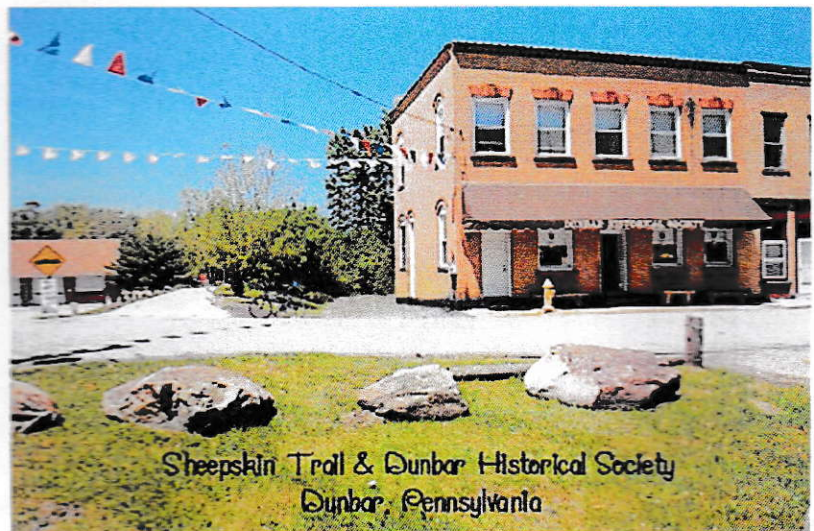
Inside the beehive coke oven are self-guided signs which tell visitors about the building materials. Inside the DHS Center are displays which help visitors understand the coke oven and how it worked.



While the beehive coke oven is now complete, the park project is not done yet. With additional funding and more hard work, the project will be completed! It is fast becoming a unique tourist attraction in Fayette County,

Why Not Come and Visit?

The Sheepskin Trail, located next to the Dunbar Historical Society Center and across from the coke oven park area, brings walkers and bikers to town.



Sheepskin Trail & Dunbar Historical Society
Dunbar, Pennsylvania

THANKS TO FUNDING SUPPORT FROM:

- *The Allegheny Foundation
- *Senator Rich Kasunic
- *Representative Deberah Kula
- *Fayette County Commissioners Vicites, Zapotosky and Zimmerlink
- *The Fayette County Tourism Grant Program
- *The Community Foundation of Fayette County
 - * Laurel Highlands Visitor's Bureau
 - * Walmart
- * Bruce Pickens and Those Who Donated to our Roof Preservation Project
- * The Coke Oven Patrons who believed in the project from the beginning!

THANKS TO LOCAL BUSINESSES, MEMBERS AND FRIENDS:

- *Vince's Electrical Service
 - * Current Construction
 - * Dunbar Machine Company
- * North Fayette County Municipal Authority
 - * Dunbar Volunteer Fire Department
 - * Dunbar Stone
 - * Garlett's Excavating
 - * Allen Brothers
 - * Albert "Tut" DeMott
 - * Ray Eberhart Jr.
- * The late Louis Ross and wife Karen for the beautiful stone for the wall
- * Former Oven Builders Albert "Cutty" Caruso and Adam Buchheit
- * To all our members and friends who helped raise funds and provide lunches
 - * The Dunbar Borough Council for the Special Recognition
 - * ASM International for the Historic Landmark Plaque
- *Elaine DeFrank and Pam Seighman-Coal and Coke Center

**THANKS TO THE INCREDIBLE WORK OF
STONE MASON BARRY PRITCHARD**

The Salient Angle in Masonry of Scottdale who volunteered
his services for this project!

**THANKS TO THE MANY VOLUNTEERS WHO WORKED SO HARD AND
DILIGENTLY TO BUILD THE OVEN AND MAINTAIN THE PARK:**

George Myers, Michael Bell, Pat Trimbath, Dennis O. Morrison,
John "Bud" Zurick, David Dynes, Donald Lowry, Paul Trimbath, Greg Lincoln, Seth Myers,
Rich Renzi, John Qualley, the late Bob Martin, Warne Rankin, Wyatt Frick
and all those who stopped by and volunteered
an hour or two to help with the project.

Special thanks to Supervisor Vince Glachetti with the SCI Outreach Program

Photos courtesy of Michael J. Bell, John Zurick, Albert DeMott,
Barry Pritchard and Donna Myers

DIRECTIONS

Dunbar, Pennsylvania is Located Between Connellsville and Uniontown 1 mile off of Rt. 119.

Traveling North on Rt. 119:

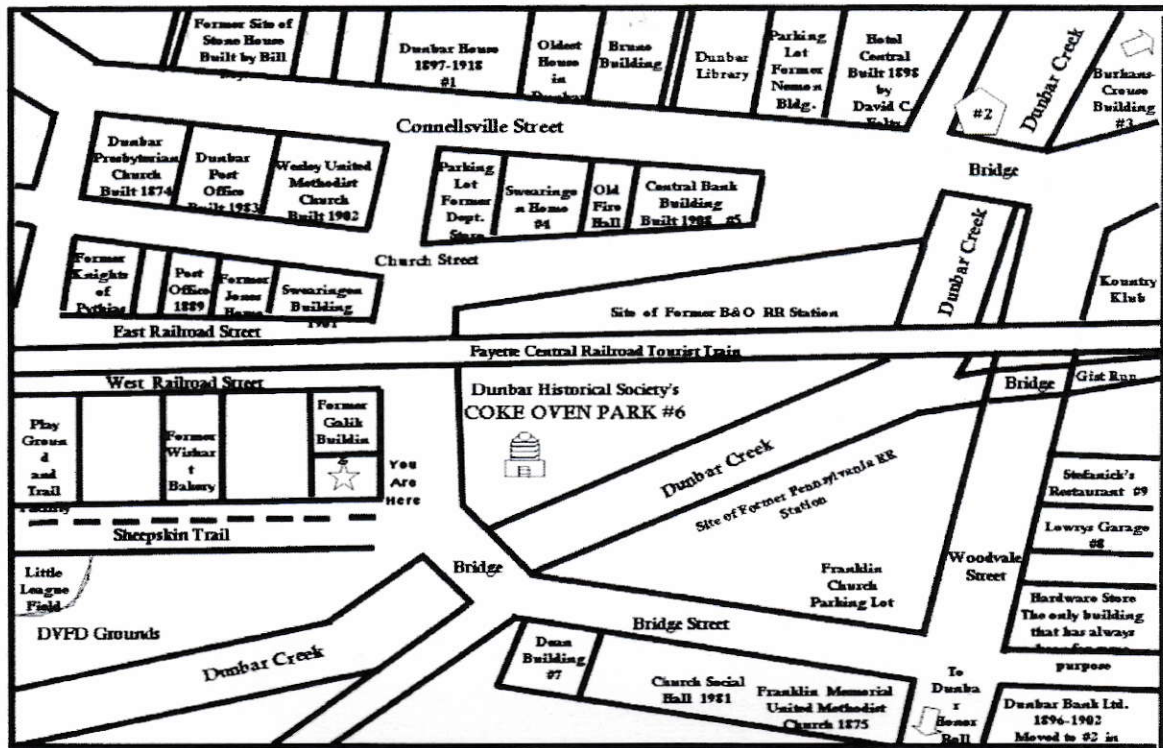
Turn right at light at Butchko's Salvage.

Traveling South on Rt. 119:

Turn left at light at Butchko's Salvage.

TOWN MAP

A VIEW FROM THE PARK



☆ Dunbar Historical Society's Education Center & Home; Built Circa 1890; Was Post Office 1907-1982

© See Additional Information Brochure by Donna Harvey Myers

This "View from the Park" Map of Dunbar provides information on the buildings that surround the Coke Oven Park and a short history of Dunbar. Visitors can also use it for a walking tour of town. Copies of the map are available at the Dunbar Historical Society Center.

We are open Saturdays 11 AM-4 PM or by appointment.
Call 724-277-8800 (leave message) or 724-277-8448 (Secretary)

See project videos, slide shows and historical information by
visiting our website at: www.dunbarhistoricalsociety.com

Donations are gratefully appreciated and tax-deductible.
Our Facility is now air-conditioned thanks to the Fayette County Tourism Grant Program and the Laurel Highlands Visitor's Bureau